



CEMENT BASED

**Liquid Screed  
Solution**





Mobicem is a high performance screed which complies with EN 13813



During its 20 years of existence Cemexa Technologies has placed itself as a key player on the European market and one of the main active leaders of cement screed development.

C20/F4

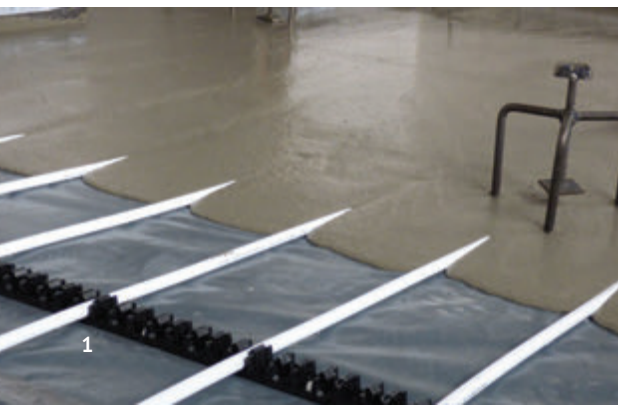
Domestic use  
and underfloor  
heating

C25/F5

Commercial use  
and underfloor  
heating

C30/F6

Special uses  
and underfloor  
heating



Mobicem is a CE Approved Cemfloor screed delivered from a computerized automatic mobile mixing truck.

The screed factory arrives on site with all the approved materials (sand , water, cement , Mobicem binder , Admixture) and is mixed under factory production control. Mixes are pre-set into the computerised batching system with full printable batch records available for each job .

Mobicem Cemfloor is used all over Europe in all different models of mobile screed trucks including Putzmeister Transmix, Brema, GB and Overmat.



## Mobicem Therm



Due to self-compacting properties of Mobicem Therm, it is specifically **designed for use with underfloor heating systems.**

Mobicem Therm screed totally **encapsulates the underfloor heating pipework and eliminates air voids** which ensures optimal heat transfer from the heating pipework to the screed surface.

It can also be installed at much thinner depths compared to traditional sand and cement which ensures ultimate controllability of the underfloor heating system.

When using underfloor heating with Mobicem, **the energy usage and cost are greatly decreased** due the efficiency of the system. High thermal conductivity of the screed and the lower thickness combines to achieve this improved performance but also mean that the response time is substantially reduced so that the whole system will heat up much quicker.



Mobicem is installed by a approved applicators who have completed the required training.



# Key Benefits



Foot traffic after 24 / 48 hours.



Larger floor area without joints up to 150m<sup>2</sup> unheated, up to 100m<sup>2</sup> with under floor heating.



Exceptional thermal conductivity.



Thinner sections compared to traditional screeds. Only 25mm of screed required above underfloor heating pipes.



Minimal drying shrinkage (<0.05%).



Can be applied in wet areas.



More thermal insulation can be used within the same floor (thickness), compared to traditional sand cement screed which leads to a better energy rating for your building.



Self-compacting – no voids around under floor heating pipes.



Reduced drying times compared to other screeds. Moisture sensitive floor coverings can be applied when the screed has dried to a moisture content of <2.5%CM.



Can be forced dried after 7 days.



No surface laitance (dust) after curing.



Easy installation; up to 1000m<sup>2</sup> per day (reduces time & costs).



Reduced carbon footprint compared to traditional screeds.



Compatible with all cement based adhesives; including fast track systems.



Lower running costs for underfloor heating systems when using Mobicem. This is due to the exceptional thermal conductivity and the ability to lay thinner screeds over the underfloor heating pipes.



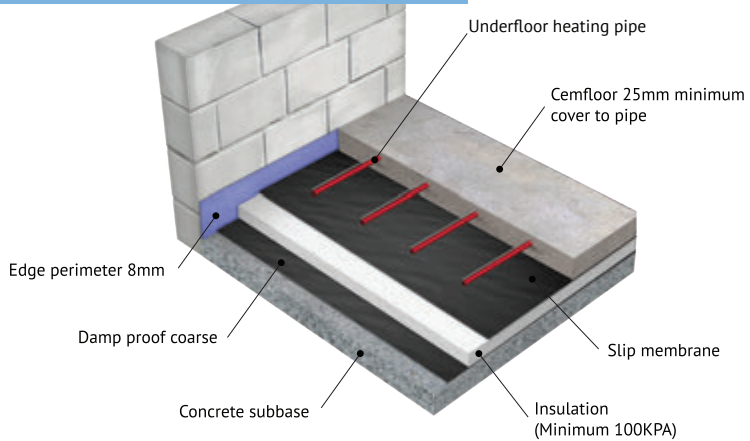
**Mobicem screeds are very responsive to underfloor heating; due to the fact that they can be laid in very thin sections and have a high thermal conductivity**

*Since Mobicem is a cement based screed:*

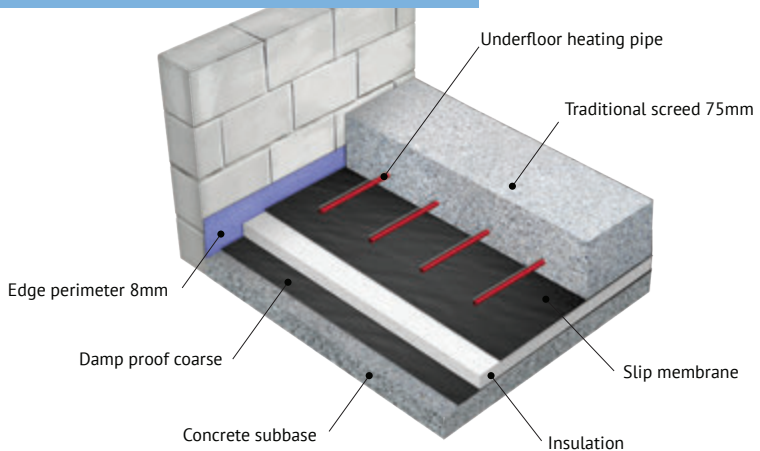
- Floor coverings can be applied much faster than calcium sulphate screeds which needs to be dried to a final moisture content of 0.5%CM which can delay floor finishings by months.
- Floor finishes can be applied once the screed has dried to a final moisture content of 2.5%CM; speeding up the entire build process.



# Mobicem



# Traditional Screed



Compared with other liquid screeds which generally need to be force dried with underfloor heating; Mobicem screeds can be used in non heated floors as it doesn't require force drying to remove moisture. Using the correct tile adhesives; tiles can be placed in as little as 5 days in nonheated floors.

# Additional Information

## Substrate

Mobicem Screed is designed for use as a bonded thick levelling screed on concrete, as a floating screed over thermal or acoustic insulation, or as an unbonded screed on top of a plastic membrane.

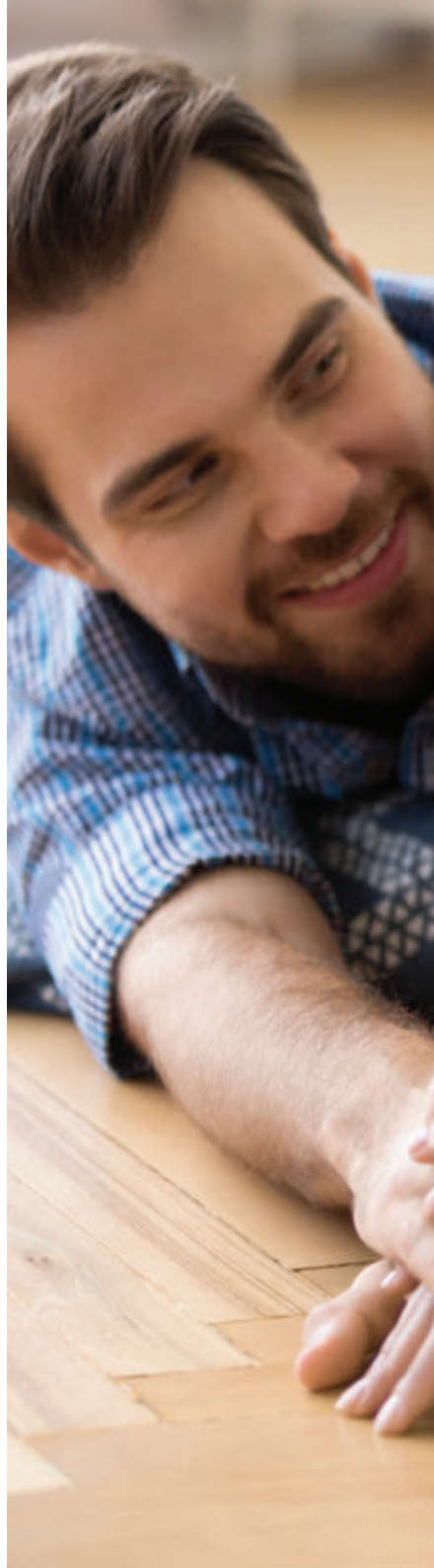
## Floor Covering

Mobicem is compatible with all types of floor coverings, cementitious adhesives, damp proof membranes and floor levellers. For technical information, contact our technical department.

## Application

Mobicem screeds should be used in accordance with BS 8204-7:2003 'Code of Practice for Pumpable Self-Smoothing Screeds'.

To ensure a high quality screed it is recommended that application is carried out by a specialist screeding contractor who has completed the necessary Mobicem training.









CEMENT BASED  
**Liquid Screed Solution**



## Technical Information

Mobicem is produced in an ISO 9001 quality-controlled environment. Self levelling screeds produced with Mobicem meet the requirements of EN 13813:2002 'Screed Material for Floor Screeds'.

### SCREED SPECIFICATION EN 13813:2002

Compressive Strength	>20 N/mm <sup>2</sup> >25 N/mm <sup>2</sup> >30 N/mm <sup>2</sup>
Flexural Strength	>4 N/mm <sup>2</sup> >5 N/mm <sup>2</sup> >6 N/mm <sup>2</sup>
Minimum Thickness	Bonded: 20mm Unbonded: 30mm Domestic Floating Floor: 35mm Commercial Floating Floor: 40mm Over underfloor heating pipes: minimum cover 25mm above pipes
Shrinkage (28 Days)	<0.05%
Flow Rate	230 – 260mm
Fire Rating	non-combustible
Open to Light Foot Traffic	24-48 Hours
Surface Flatness	Min SR2
ISCR Test	Category A
Maximum Bay Sizes	Heated Floors = 100m <sup>2</sup> Non-Heated Floors = 150m <sup>2</sup>

Please send all enquiries to [info@cemfloor.co.uk](mailto:info@cemfloor.co.uk)





**IRE:** (353) 94 9553900

**UK:** (44) 1415 30 7587



**IRE:** Cregaree Quarry, Cong,  
Co Mayo, Ireland F31 W425

**UK:** Rothesay, Clydebank, West  
Dunbartonshire, Glasgow,  
G81 1QB, Scotland



**W:** [www.cemfloor.co.uk](http://www.cemfloor.co.uk)

**E:** [info@cemfloor.co.uk](mailto:info@cemfloor.co.uk)

